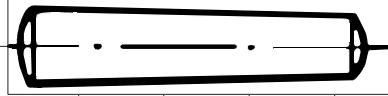
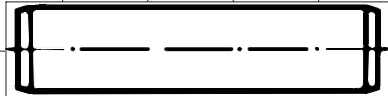


DIN 1 Taper Pins												
Diameter	M1	M1.5	M2	M2.5	M3	M4	M5	M6	M8	M10	M12	M16
Length												
8	0.058											
10	0.075	0.160										
12	0.095	0.206	0.341	0.526								
14	0.114	0.240	0.404	0.620	0.88							
16	0.135	0.295	0.468	0.712	1.02	1.78						
20		0.384	0.605	0.914	1.29	2.23	3.47					
30			0.991	1.470	2.04	3.48	5.31	7.76	13.1			
40				2.100	2.88	4.84	7.30	10.3	17.8	27.6	39.6	69.8
45					3.35	5.56	8.35	11.7	20.2	31.2	44.6	78.6
50					3.83	6.31	9.45	13.4	22.7	34.9	49.8	87.4
55						7.12	10.60	14.7	25.3	38.8	55.2	96.4
60						7.94	11.80	16.3	27.8	42.5	60.2	105.0
70							14.20	19.7	33.2	50.4	71.8	123.0
80								24.3	38.8	58.5	83.0	143.0
90								28.4	44.5	67.0	94.5	162.0
100								32.6	50.5	75.7	106.0	181.0
120									63.5	94.0	130.0	222.0
140									114.0	157.0	265.0	



DIN 7 Dowel Pins														
Diameter	M1	M1.2	M1.5	M2	M2.5	M3	M4	M5	M6	M8	M10	M12	M16	M20
Length														
2														
3	0.018	0.027	0.044											
4	0.025	0.036	0.058	0.105	0.165	0.245								
5	0.032	0.045	0.072	0.130	0.204	0.300	0.341	0.879						
6	0.038	0.054	0.085	0.155	0.243	0.355	0.640	1.020	1.53					
8	0.048	0.072	0.113	0.203	0.320	0.466	0.840	1.330	1.97	3.58				
10	0.062	0.090	0.141	0.253	0.397	0.577	1.040	1.640	2.41	4.37	7.01	10.2		
12	0.074	0.107	0.168	0.302	0.474	0.688	1.230	1.950	2.85	5.16	8.24	12.0		
14		0.125	0.195	0.351	0.550	0.799	1.440	2.260	3.29	5.95	9.47	13.8		
16			0.224	0.401	0.627	0.910	1.630	2.570	3.73	6.74	10.70	15.6	28.3	
18				0.451	0.705	1.020	1.830	2.880	4.17	7.53	11.90	17.4	31.5	
20				0.500	0.782	1.130	2.030	3.190	4.61	8.31	13.20	19.2	34.7	56.4
24					0.937	1.350	2.430	3.800	5.50	9.89	15.60	22.8	41.1	66.2
28						1.570	2.820	4.420	6.40	11.50	18.00	26.4	47.5	76.0
32						1.790	3.210	5.030	7.30	13.00	20.60	30.0	53.9	85.8
36							3.600	5.650	8.19	14.60	23.10	33.6	60.3	95.6
40							4.000	6.270	9.08	16.20	25.50	37.2	66.6	105.0
45								7.030	10.20	18.10	28.60	41.7	74.5	118.0
50								7.800	11.30	20.10	31.70	46.2	82.5	130.0
55									12.40	22.10	34.80	50.7	90.4	142.0
60									13.50	24.00	37.90	55.2	98.4	155.0
70										28.00	44.10	64.1	114.0	179.0
80										32.00	50.30	73.0	130.0	204.0
90											56.50	82.1	146.0	228.0
100											62.70	91.0	161.0	253.0
120												109.0	192.0	302.0
140													224.0	351.0



Weight in kgs. per 1,000 pcs. unless otherwise specified. All weights are approximations.  
All information is strictly informative