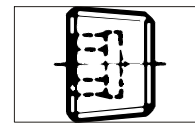
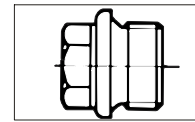


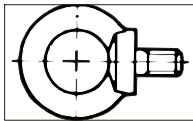
DIN 6914 Hex Head Structural Bolts								
Diameter	M12	M16	M20	M22	M24	M27	M30	M36
Length								
30	49.1							
35	53.6							
40	58.0	105						
45	62.1	113	188					
50	66.6	121	200	257				
55	71.0	129	212	272				
60	75.4	137	225	286	362			
65	79.9	145	237	301	380			
70	84.3	153	249	316	398	532		
75	88.8	160	262	331	415	554	701	
80	93.2	168	274	346	433	576	728	
85	97.6	176	286	361	451	599	756	1184
90	102	184	298	375	467	621	784	1224
95	107	192	310	390	485	644	812	1264
100		199	322	405	503	665	838	1304
105		207	335	420	520	688	865	1336
110		215	347	435	538	710	893	1376
115		223	359	450	556	732	921	1415
120		231	372	465	574	755	949	1455
125		239	384	479	591	777	976	1495
130		247	396	494	609	800	1004	1535
135			409	509	627	822	1032	1575
140			421	524	645	845	1059	1615
145			433	539	662	867	1087	1655
150			446	554	680	890	1115	1695
155			458	569	698	912	1143	1735
160				584	716	935	1170	1775
165				599	733	957	1198	1815
170					751	979	1226	1855
175					769	1002	1254	1895
180					787	1024	1281	1935
185					804	1047	1309	1974
190					822	1069	1337	2014
195					840	1092	1365	2054
200						1114	1392	2094



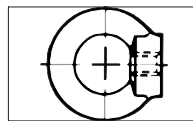
DIN 906 Hexagon Socket Pipe Plug Conical Thread		
Size	Weight	
M8x1		2.07
M10x1		3.38
M12x1.5		6.10
M14x1.5		8.10
M16x1.5		11.0
M18x1.5		14.6
M20x1.5		17.6
M22x1.5		22.0
M24x1.5		30.8
M26x1.5		38.6
M27x2		40.2
M30x1.5	M30x2	44
	M33x2	57.5
M36x1.5		85.2
M38x1.5		94.4
	M39x2	103
M42x1.5	M42x2	135
M45x1.5	M45x2	167
M48x1.5	M48x2	214
M52x1.5	M52x2	253
	M56x2	274
	M60x2	350



DIN 910 Hexagon Socket Pipe Plug Collar Cylindrical Thread		
Size	Weight	
M10x1		12.0
M12x1.5		20.3
M14x1.5		25.0
M16x1.5		35.2
M18x1.5		48.6
M20x1.5	M20x2	64.5
M22x1.5		73.4
M24x1.5		93.5
M26x1.5		120
M27x2		127
M30x1.5	M30x2	148
	M33x2	195
M36x1.5	M36x2	220
M38x1.5		238
	M39x2	255
M42x1.5	M42x2	300
M45x1.5	M45x2	340
M48x1.5	M48x2	375
M52x1.5	M52x2	430
	M56x2	620
	M60x2	695
	M64x2	774



DIN 580 Lifting Eye Bolt	
Size	Weight in kg per piece
M8	0.06
M10	0.11
M12	0.18
M16	0.28
M20	0.45
M24	0.74
M30	1.66
M36	2.65
M42	4.03
M48	6.38
M56	8.80
M64	12.4
M72	23.3
M80	34.2
M100	49.1



DIN 582 Lifting Eye Nut	
Size	Weight in kg per piece
M8	0.05
M10	0.09
M12	0.16
M16	0.24
M20	0.36
M24	0.72
M30	1.32
M36	2.08
M42	3.11
M48	5.02
M56	6.69
M64	9.30
M72	18.5
M80	27.3
M100	36.4

Weight in kgs. per 1,000 pcs. unless otherwise specified. All weights are approximations.
All information is strictly informative