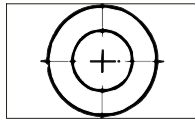
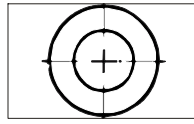


| DIN 93 Tab Washer | |
|-------------------|--------|
| Size | Weight |
| M3 | 0.368 |
| M3.5 | 0.356 |
| M4 | 0.487 |
| M5 | 1.05 |
| M6 | 1.21 |
| M7 | 1.17 |
| M8 | 2.32 |
| M10 | 3.13 |
| M12 | 6.00 |
| M14 | 7.00 |
| M16 | 8.50 |
| M18 | 11.0 |
| M20 | 11.0 |
| M22 | 14.8 |
| M24 | 14.2 |
| M27 | 31.0 |
| M30 | 36.3 |
| M33 | 42.0 |
| M36 | 51.3 |
| M39 | 59.7 |
| M42 | 69.5 |
| M45 | 81.2 |
| M48 | 89.0 |
| M52 | 98.0 |



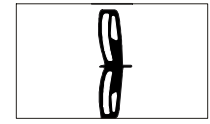
| DIN 125 Flat Washer | |
|---------------------|--------|
| Size | Weight |
| M1.6 | 0.024 |
| M1.7 | 0.031 |
| M2 | 0.037 |
| M2.3 | 0.092 |
| M2.5 | 0.088 |
| M2.6 | 0.127 |
| M3 | 0.119 |
| M3.5 | 0.155 |
| M4 | 0.308 |
| M5 | 0.443 |
| M6 | 1.02 |
| M7 | 1.39 |
| M8 | 1.83 |
| M10 | 3.57 |
| M12 | 6.27 |
| M14 | 8.62 |
| M16 | 11.3 |
| M18 | 14.7 |
| M20 | 17.2 |
| M22 | 18.3 |
| M24 | 32.3 |
| M26 | 43.7 |
| M27 | 42.3 |
| M28 | 40.9 |
| M30 | 53.6 |
| M32 | 77.4 |
| M33 | 75.3 |
| M35 | 94.3 |
| M36 | 92.1 |
| M38 | 136 |
| M39 | 133 |
| M40 | 130 |
| M42 | 183 |
| M45 | 220 |
| M48 | 294 |
| M50 | 284 |
| M52 | 330 |
| M55 | 431 |
| M56 | 425 |
| M58 | 472 |
| M60 | 458 |
| M64 | 492 |
| M68 | 586 |
| M72 | 626 |
| M76 | 749 |



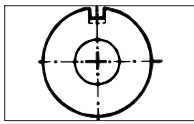
| DIN 126 Flat Washer | |
|---------------------|--------|
| Size | Weight |
| M5 | 0.430 |
| M6 | 0.991 |
| M7 | 1.36 |
| M8 | 1.73 |
| M10 | 3.44 |
| M12 | 6.07 |
| M14 | 8.38 |
| M16 | 11.0 |
| M18 | 14.0 |
| M20 | 16.4 |
| M22 | 17.5 |
| M24 | 31.1 |
| M27 | 39.5 |
| M30 | 50.5 |
| M33 | 71.0 |
| M36 | 87.4 |
| M39 | 127 |
| M42 | 175 |
| M45 | 212 |
| M48 | 284 |



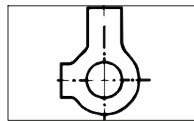
| DIN 127 Lock Washer | |
|---------------------|--------|
| Size | Weight |
| M2 | 0.033 |
| M2.2 | 0.050 |
| M2.5 | 0.053 |
| M3 | 0.11 |
| M3.5 | 0.12 |
| M4 | 0.18 |
| M5 | 0.36 |
| M6 | 0.83 |
| M7 | 0.93 |
| M8 | 1.60 |
| M10 | 2.53 |
| M12 | 3.82 |
| M14 | 6.01 |
| M16 | 8.91 |
| M18 | 9.73 |
| M20 | 15.2 |
| M22 | 16.5 |
| M24 | 26.2 |
| M27 | 28.7 |
| M30 | 44.3 |
| M36 | 67.3 |
| M39 | 71.7 |
| M42 | 111 |
| M45 | 117 |
| M48 | 123 |
| M52 | 182 |
| M56 | 193 |
| M60 | 203 |
| M64 | 218 |
| M68 | 228 |



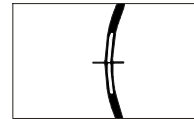
| DIN 128 | |
|---------|--------|
| Size | Weight |
| M2 | 0.035 |
| M2.5 | 0.055 |
| M3 | 0.09 |
| M3.5 | 0.10 |
| M4 | 0.15 |
| M5 | 0.30 |
| M6 | 0.70 |
| M7 | 0.75 |
| M8 | 1.30 |
| M10 | 2.10 |
| M12 | 3.20 |
| M14 | 4.80 |
| M16 | 7.00 |
| M18 | 7.80 |
| M20 | 12.2 |
| M22 | 13.3 |
| M24 | 21.5 |
| M27 | 23.7 |
| M30 | 42.5 |
| M36 | 68.0 |



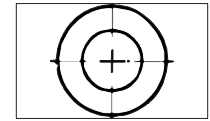
| DIN 432 Tab Washer | |
|--------------------|--------|
| Size | Weight |
| M3 | 0.33 |
| M3.5 | 0.32 |
| M4 | 0.44 |
| M5 | 1.20 |
| M6 | 1.48 |
| M7 | 1.42 |
| M8 | 2.54 |
| M10 | 3.49 |
| M12 | 5.48 |
| M14 | 6.38 |
| M16 | 7.45 |
| M18 | 9.15 |
| M20 | 13.1 |
| M22 | 19.4 |
| M24 | 18.5 |
| M27 | 24.8 |
| M30 | 29.8 |
| M33 | 34.2 |
| M36 | 52.5 |
| M39 | 63.3 |
| M42 | 72.5 |
| M45 | 85.3 |
| M48 | 93 |



| DIN 463 Tab Washers | |
|---------------------|--------|
| Size | Weight |
| M3 | 0.229 |
| M3.5 | 0.251 |
| M4 | 0.327 |
| M5 | 0.55 |
| M6 | 0.8 |
| M8 | 1.71 |
| M10 | 2.51 |
| M12 | 4.41 |
| M14 | 5.09 |
| M16 | 6.3 |
| M18 | 8.24 |
| M20 | 9 |
| M22 | 10 |
| M24 | 12 |
| M27 | 25.3 |
| M30 | 31.4 |
| M33 | 35.6 |
| M36 | 42.5 |
| M39 | 49.7 |
| M42 | 59.2 |
| M45 | 70.3 |
| M48 | 80 |
| M52 | 90.2 |



| DIN 6796 Spring Washer | |
|------------------------|--------|
| Size | Weight |
| M2 | 0.05 |
| M2.5 | 0.09 |
| M3 | 0.14 |
| M3.5 | 0.25 |
| M4 | 0.38 |
| M5 | 0.69 |
| M6 | 1.43 |
| M7 | 2.53 |
| M8 | 3.13 |
| M10 | 6.45 |
| M12 | 12.4 |
| M14 | 21.6 |
| M16 | 30.4 |
| M18 | 38.9 |
| M20 | 48.8 |
| M22 | 63.5 |
| M24 | 92.9 |
| M27 | 113 |
| M30 | 170 |



| DIN 1440 Flat Washer | |
|----------------------|--------|
| Size | Weight |
| M3 | .13 |
| M4 | .23 |
| M5 | .36 |
| M6 | .98 |
| M7 | 1.33 |
| M8 | 2.22 |
| M9 | 3.69 |
| M10 | 4.56 |
| M11 | 9.25 |
| M12 | 8.99 |
| M13 | 8.36 |
| M14 | 10.8 |
| M16 | 9.68 |
| M18 | 13.8 |
| M20 | 15 |
| M22 | 16.2 |
| M23 | 18.5 |
| M25 | 23.6 |
| M26 | 28.5 |
| M28 | 29.7 |
| M30 | 34.2 |
| M32 | 44.8 |
| M33 | 43.3 |
| M35 | 52.8 |
| M36 | 49.5 |
| M40 | 63.7 |
| M45 | 76.8 |
| M50 | 101 |

Weight in kgs. per 1,000 pcs. unless otherwise specified. All weights are approximations.
All information is strictly informative