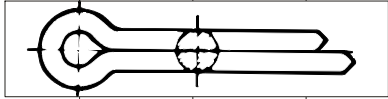


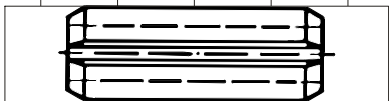
DIN 94 Split Pins											
Diameter	M1	M1.6	M2	M2.5	M3.2	M4	M5	M6.3	M8	M10	M13
Length											
6	0.03										
8	0.04	0.10									
10	0.05	0.12	0.25								
12	0.06	0.14	0.28	0.51							
14	0.07	0.16	0.31	0.57							
16	0.08	0.18	0.34	0.63							
18	0.10	0.20	0.37	0.69	1.00						
20		0.22	0.40	0.75	1.09	2.16	3.49				
22		0.24	0.43	0.81	1.18	2.28	3.74				
25		0.27	0.47	0.90	1.31	2.52	4.00				
28		0.30	0.51	0.98	1.45	2.76	4.49	8.04			
32		0.34	0.56	1.10	1.64	3.07	5.00	8.90			
36			0.61	1.22	1.80	3.39	5.49	9.76	15.9		
40			0.66	1.34	2.00	3.71	6.00	10.60	17.2		
45				1.49	2.17	4.11	6.61	11.70	18.9		
50				1.64	2.43	4.51	7.24	12.80	20.6		
56					2.70	5.00	8.00	14.00	22.6	38.0	69.5
63					3.02	5.55	8.67	15.60	25.0	41.8	76.0
71					3.38	6.20	9.86	17.30	27.7	46.2	83.4
80					3.78	6.91	11.00	19.20	30.7	51.2	91.8
90						7.71	12.20	21.30	34.1	56.7	101.0
100						8.51	13.50	23.50	37.5	62.2	111.0
112						9.46	15.00	26.10	41.5	66.0	122.0
125						10.50	16.60	28.90	45.9	75.9	134.0
140								32.10	51.0	84.2	148.0



Weight in kgs. per 1,000 pcs. unless otherwise specified. All weights are approximations.  
All information is strictly informative

**DIN 1481 Spring Pins**

Diameter Length	M1	M1.5	M2	M2.5	M3	M3.5	M4	M4.5	M5	M6	M8	M10	M12	M14	M16	M20
	4	0.015	0.034	0.061	0.095	0.136	0.197	0.239								
5	0.019	0.043	0.077	0.118	0.17	0.246	0.299	0.397	0.471							
6	0.023	0.051	0.092	0.142	0.204	0.296	0.358	0.476	0.566							
8	0.031	0.068	0.122	0.189	0.272	0.394	0.478	0.635	0.754							
10	0.038	0.085	0.153	0.236	0.34	0.493	0.597	0.793	0.942	1.38	2.24	3.69	5.55	7.8	9.19	15.3
12	0.045	0.103	0.184	0.283	0.407	0.591	0.716	0.952	1.13	1.66	2.66	4.43	6.66	9.35	11	18.4
14	0.052	0.12	0.214	0.33	0.475	0.689	0.836	1.11	1.32	1.94	3.13	5.17	7.78	10.9	12.9	21.4
16	0.059	0.137	0.244	0.377	0.543	0.788	0.955	1.27	1.51	2.21	3.58	5.9	8.89	12.5	14.7	24.5
18	0.067	0.154	0.275	0.424	0.611	0.886	1.07	1.43	1.70	2.49	4.03	6.64	10	14	16.5	27.5
20	0.076	0.171	0.305	0.471	0.679	0.985	1.19	1.59	1.88	2.77	4.48	7.38	11.1	15.6	18.4	30.6
22			0.336	0.519	0.746	1.08	1.31	1.75	2.07	3.04	4.92	8.12	12.2	17.1	20.2	33.6
24			0.367	0.565	0.814	1.18	1.43	1.9	2.26	3.32	5.37	8.86	13.3	18.7	22	36.7
26			0.397	0.613	0.882	1.28	1.55	2.06	2.45	3.6	5.82	9.59	14.4	20.3	23.9	39.8
28			0.427	0.66	0.95	1.38	1.67	2.22	2.64	3.87	6.26	10.3	15.6	21.8	25.7	42.8
30			0.458	0.707	1.02	1.48	1.79	2.38	2.83	4.15	6.71	11.1	16.7	23.4	27.6	45.9
32					1.09	1.58	1.91	2.54	3.02	4.43	7.16	11.8	17.8	24.9	29.4	48.9
36					1.22	1.77	2.18	2.86	3.39	4.98	8.06	13.3	20	28.1	33.1	55.1
40					1.36	1.97	2.39	3.17	3.77	5.54	8.95	14.8	22.2	31.2	36.7	61.2
45							2.68	3.57	4.24	6.23	10.1	16.6	25	35.1	41.3	68.8
50							2.98	3.96	4.71	6.92	11.2	18.4	27.8	39	45.9	76.5
55									5.18	7.61	12.3	20.3	30.5	42.9	50.5	84.1
60									5.65	8.3	13.4	22.1	33.3	46.8	55.1	91.8
65									6.12	8.99	14.5	24	36.1	50.1	59.7	99.4
70									6.59	9.69	15.7	25.8	38.9	54.6	64.3	107
75									7.06	10.4	16.8	27.7	41.7	58.5	68.9	115
80									7.54	11.1	18.0	29.5	44.4	62.4	73.5	122
85										11.8	19.0	31.4	47.2	66.3	78.1	130
90										12.5	20.1	33.2	50	70.2	82.7	138
95										13.1	21.3	35	52.8	74.1	87.3	145
100										13.8	22.4	36.9	55.5	77.9	91.9	153
120											26.8	44.3	66.6	93.5	110	184
140												51.7	77.8	109	129	214
160												59	88.9	125	147	245
180													100	140	165	275



**Weight in kgs. per 1,000 pcs. unless otherwise specified. All weights are approximations.**  
All information is strictly informative